

# S. A. President Outlines Plans For This Year

Students this year will have an opportunity to take an active hand in shaping the future of the University, according to Allan Handler, President of the Student Association.

"With student representatives on all of the Faculty Committees, the student body will be able to keep abreast of nearly all phases of University development, he said. In fact, on most committees, there is an equal ratio of students and faculty."

"For example, four students and four faculty members serve on the vital Student Affairs Committees, which has the power to allocate University finds," Handler pointed out.

"We have proven people on the Committees," he said, "and we expect them to do a good job."

Although filling Committee posts is an important undertaking, the main purpose of the Student Association is to serve its members, he explained. For example, the S.A. sponsors the Concert and Lecture series, dances, mixers, the book pool and the intramural program.

Technically, everyone enrolled at the University is a member of the Student Association, but most of its decision and policy making lies in the hands of the student-elected Senate. There is also an Executive branch, headed by President Handler, and a Judicial branch, the Student Court.

The three branches, Legislative, Executive, and Judicial, operate in a manner similar to the Federal set-up.

The S. A., under University supervision, has the power to appropriate funds, sponsor organizations, grant club charters, determine certain regulations, and handle nearly all the social, cultural and athletic activities on campus.

The Senate meets twice a month, and all students are allowed to attend the sessions.

# MIZZOU NEWS

University of Missouri at St. Louis

Vol. 2 No. 1

October 4, 1965

Cost 10¢

## Student Expelled, One Suspended For Bringing Liquor On Campus



FIRST JUNIOR CLASS. Dr. H. E. Mueller, Dean of Admissions, assists junior scholarship student Claudia Wilderman, (l.) with registration. Francis Mahar, University staff member, looks on.

## New Classrooms Opens; Enrollment Here Soars

With the start of classes today in the just completed Classroom Building, the University of Missouri at St. Louis took a king-size step toward its ultimate goal of 23,500 students by 1975.

Enrollment here soared to over 4,800 day and evening students, an increase of 80 per cent over last year, according to Dr. H.E. Mueller, Dean of Admissions.

Swamped with applications for day school this term, the University was forced to close enrollment last March.

According to projections made by Dr. Robert McNamera and Mr. Rex Campbell of the University of Missouri, the St. Louis Campus can expect an even heavier wave of applications in the future. Studies show that nearly 40 per cent of the State's college age population, a figure estimated at 130,000, will be concentrated in the St. Louis area.

To meet the anticipated enrollment, the University plans to construct twenty-five buildings over its rolling 128-acre tract. If campus expansion moves on schedule, the University here will top Columbia's enrollment within ten years.

In the future, the University at St. Louis will concentrate on undergraduate and general graduate study, while Columbia will shift its emphasis to specialized graduate and professional work.

Although classes began today in the University's new \$3,500,000 building, the science labs, faculty

offices, and the two large lecture halls remain uncompleted. Plagued by strikes, construction has moved in slow-motion during the summer months.

For the first couple weeks, University officials expect some confusion due to rescheduling of classes. Labs have been set up in the Administration Building and the larger lecture classes will be held in nearby church halls. As soon as the facilities are ready, all classes will be held in the new building.

## THREE OTHERS MADE DEANS

### Dr. Bugg Named Chancellor Here

President Elmer Ellis announced last June 18, 1965, a change of title for Dr. James L. Bugg, Jr., from Dean of the Faculty to Chancellor of the University of Missouri at St. Louis, effective July 1. Chancellor Bugg also retains his academic title of professor of history.

The elevation of Dr. Bugg to the chancellorship signals the approaching inauguration of the junior year curriculum on the University's St. Louis campus. It also completes the appointment of the chancellors to head the four campuses in the master plan of the State-wide University System.

Dr. Bugg was named Dean of the Faculty of the campus at St. Louis in 1963 when the Board of Curators authorized the transi-

tion of the Normandy Residence Center into a full four-year institution of University status by 1966, and the General Assembly appropriated funds for operations and for new buildings to facilitate this development.

President Ellis announced plans at that time to make Dr. Bugg a Chancellor as the University of Missouri at St. Louis approached the degree-granting status.

Chancellor Bugg has been on the University staff since 1949, when he was appointed instructor in history at Columbia. He was promoted to assistant professor in 1950; to associate professor in 1954; and to full professor-

ing alcoholic beverages by a University official at the Student Association sponsored pool and patio party last May 28.

Both were brought before the Student Affairs Committee, which voted to suspend the one student from the University until January 1966. The other violator was unconditionally expelled. The committee withheld their names.

At the same meeting, the Committee voted to place the Student

Association on social probation with the provision that the ban would be lifted when the S. A. presented an acceptable plan to safeguard against any further incidents. Under University regulations, the Student Association could not sponsor any social functions until a plan was approved.

S. A. President Alan Handler drafted a plan and submitted it to the Student Affairs Committee August 13. The plan was voted acceptable and the social ban was immediately lifted.

Provisions of the plan are: "The Student Association contends that the vast majority of students are law abiding University citizens, and if they are aware of rules and regulations they will adhere to them. The Student Association proposes to inform all students of University policy.

"First, we will begin with new student orientation. The new college student will be presented a clear portrait of University policy and the consequences if the policy is not followed."

"Secondly, the Student Association will attempt to reach the veteran students. We would like to see that each advanced student is sent a University handbook in order that he can renew his acquaintance with University policy."

"The third step will be that all posters and notices for Student Association functions will include University regulations."

"Students found violating University regulations at any S. A. sponsored function will be taken to the Student Association member in charge. The violator will be identified, removed from the function if necessary, and his name will be given to the Student Court or the Student Affairs Committee for action."

## The Inside Story

NEWS: Try your luck at naming the M.U.-St. L. mascot. SEE Page three.

EDITORIALS S. A. Probation too stiff a punishment. SEE Page two.

FEATURES: Traffic problems puzzle campus planners. SEE Page three.

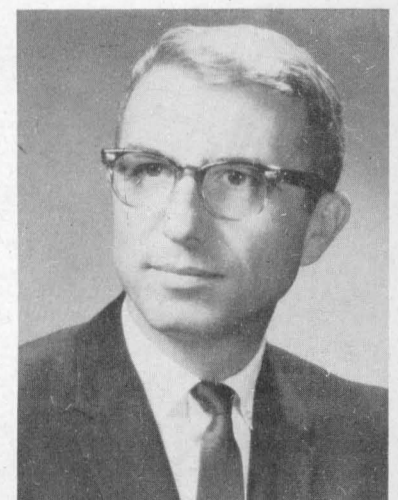
SPORTS Co-eds are needed as Cheerleaders. SEE Page six.

SPECIAL: Chancellor James L. Bugg, Jr. addresses students. SEE Page two.

## Mizzou NEWS Meets Today

There will be a student newspaper meeting for members and prospective staff members of the Mizzou NEWS today at 3 p.m. in room 211, in the Administration Building.

Reporters, feature and editorial writers, typists, photographers, and artists are still needed, and anyone wishing to join the staff may apply at this time.



(Continued to Page 4)

CHANCELLOR BUGG

**Editorials**

*Our Platform*

It is the responsibility of any newspaper to report the news with integrity, courage, and style. With this as our motto, the staff of the **Mizzou NEWS** presents the following editorial policy.

We shall be non-partisan and non-sectarian, reporting only the facts surrounding the issues, and reserving comment for the editorial page. We will objectively and honestly report the news without restraint within the bounds of good taste; however, we will not be afraid to print controversial matters.

In accordance with our goal, the **Mizzou NEWS** will strive to meet three primary purposes. First, as observers of campus happenings, we will be the watchdog of the student body. Second, we will promote student-faculty relations through better understanding. Third, by reporting school-related events, we will increase the interest of students and community in the University of Missouri at St. Louis.

Pamela Johnson, Editor

*Justice?*

The **Mizzou NEWS** strongly supports all law-abiding citizens of the University and, with the Administration, is in favor of punishing law offenders; however, in the same vein, we do not condon reprimanding innocent students for something that many did not even know about until today!

We feel that the Student Affairs Committee definitely was unjust in putting the entire Student Association on social probation for 1965-66 unless a suitable plan was submitted to keep similar incidents from happening.

It must be emphasized that the two young men deserved their "just reward." But, was it necessary to deprive 2,500 other day students of all social affairs for an entire year?

In the first place, these two boys would not be here to feel the effects of such punishment. Secondly, these methods seem a bit childish for a sophisticated university. It is like a weary mother who spanks all the children because one got into the cookie jar.

Perhaps, this move was to let the students, through the S. A., solve a student problem. If this was the case, why couldn't the Student Affairs Committee ask for a plan from the S. A. without putting it on probation? Certainly, the Student Association was not guilty of drinking, also!

Fortunately, Mr. Allan Handler, President of the S. A. submitted an acceptable proposition to the Committee and the S. A. is now off probation; however, we hope this incident will not become a precedent for the future.

PLJ

*Welcome Pioneers!*

Today marks the beginning of a new school year. For some it is the start of an interesting four years—four years filled with hard work, new friends, and fresh experiences. For others, it is the continuation of studies in their chosen fields. To all it is an opportunity to help "pioneer" on a new campus, complete with a new building and a few hardships; however, we couldn't be pioneers without hardships!

The **Mizzou NEWS** staff would like to welcome you and remind you that the precedents we set now will hold as traditions for future students. We hope that you, too, will feel the responsibility as well as the privilege of deciding how things are to be done.

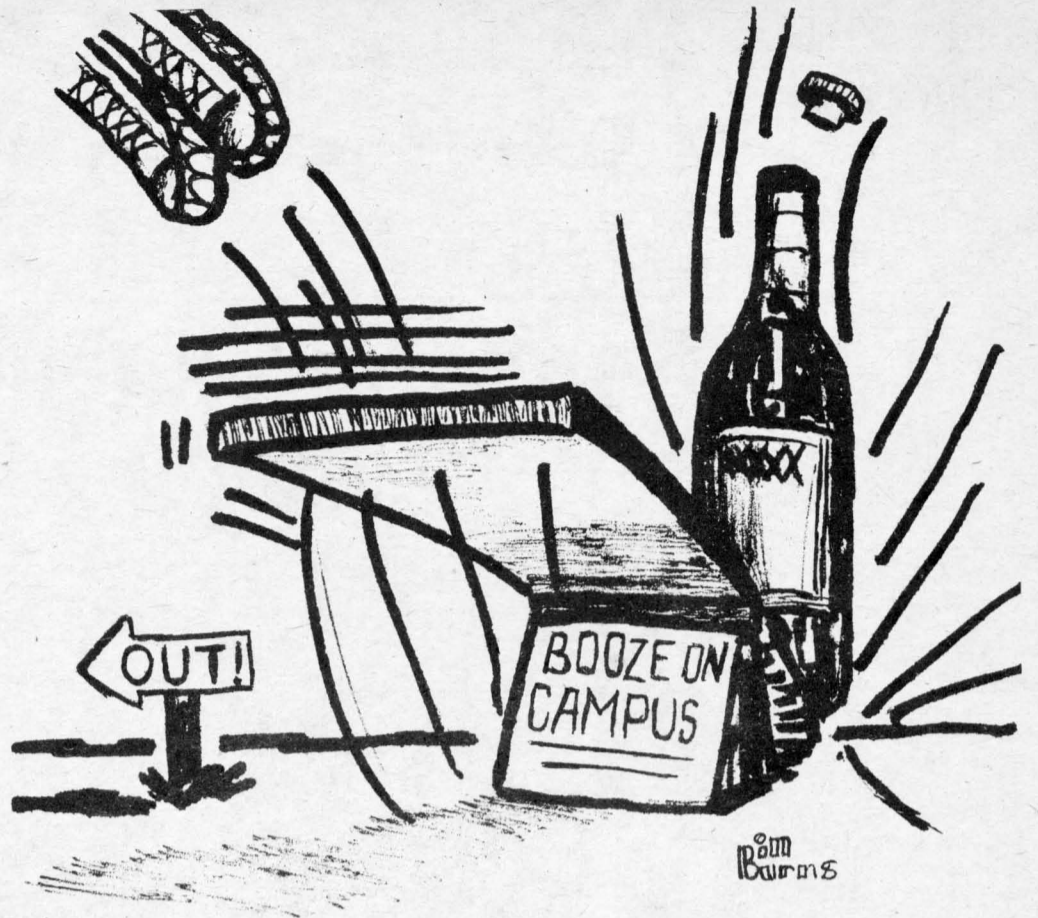
*Have an Opinion?*

The **Mizzou NEWS** welcomes any letters and written opinions from students and faculty on any subject concerning the University, campus, surrounding communities, or editorial commentary.

Not only do letters to the editor allow personal public comment, but they offer a guideline for the staff.

Letters sent to the editor will appear on the editorial page. They should be brief, typed and they must be signed.

**SPRINGBOARD TO EXPULSION**



**WELCOME AND SOME ADVICE**

**Chancellor Bugg Addresses Students**

Office of the Chancellor  
To: The Students

I am grateful to the Editor, Miss Johnson, for providing me with this opportunity to address the student body. All of you who are studying here are an integral part of this Campus, and upon you, equally with the faculty and administration, rests the responsibility and the opportunity of justifying its existence to the people of Missouri who are now, and who will continue, investing a large amount of money in its operation. The faculty and administration have a responsibility which we cannot escape, to provide you with a superior education, for nothing less than this will equip you for the kind of economic, political and social world in which we live. You, in turn, have a responsibility equally as great, and one which you cannot escape, to invest sufficient time and effort to take advantage of the educational opportunities which are offered to you. This, however, is only the beginning, not the end, of your responsibility. For you have an obligation to this institution and to the State of Missouri. To this institution, because its future will depend heavily on the attitude which you and your successors adopt toward it. It can become a great institution of learning, or it can just as easily become just another college. The difference really lies in the commitment, the attitude, and the efforts of administration, faculty and students alike. For all are an integral part of this academic community, with equal if different responsibilities. The dedication of all of us is necessary to its future development. By enrolling in this institution you are accepting the assistance provided by the citizens of this community and this State. For your fees pay but a small portion of the total budget here. In so doing you also assume an obligation to repay the community and the State by dedicating your talents and your efforts to their welfare. It is an obligation which you may ignore, but which you cannot really escape.

I welcome each of you, and especially those of you who are enrolled here for the first time. As you know, this is a new campus for it opened its doors only six years ago, and it has been a Campus of the University of Missouri for only two years. That is a very brief period in the life of most educational institutions, and you will find that there are many things which are still in a period of formation. Few precedents and traditions have been established. This is, of course, both a disadvantage and an opportunity for a new institution. For you become an active participant in the formative period. It is more difficult to begin or to establish traditions than to merely inherit and continue them. But it is also more creative and more rewarding, especially if they are constructive. There are, however, certain things which you will find. We are dedicated to academic achievement above all things. We believe that any student really educates himself, and that part of that education is the development of creativity and the ability to think of one self. We believe that there is no easy road to knowledge, only the assurance that once obtained, it brings understanding. We believe that knowledge, as Lord Bacon expressed it many years ago, is power, and that is one of the very few forms of power which brings satisfaction. We believe that students should have both

the opportunity and the responsibility of assisting in the determining of University policy, and students sit as working and voting members of many committees which determine policy. We assume that the students who come here are sincere, honest and honorable men and women, that they have the welfare of this institution at heart, and that they will help to advance its interests and do nothing to hurt its reputation or its standing. This gives us a certain way of meeting and working with students which we believe is of benefit to them as well as to us. Those few, and they are very few, who cannot accept this attitude, have no place here. There will be difficulties this year, for we have considerable problems. The new building is not yet completed, and this will cause problems for all of us, and particularly for those in Science who must make do with substitute facilities for most of the semester. We have far too little space, and this will remain a problem for as long as you are here. Architects are now drawing plans for a library building and a classroom building to house Mathematics and Languages. But their completion is two years in the future. As a state university we are dependent upon the state legislature to provide us with the facilities we need. This year we shall request a

(Continued to Page 4)

**MIZZOU NEWS**

University of Missouri at St. Louis

The **Mizzou News** is published bi-weekly by the students of the University of Missouri at St. Louis, 8001 Natural Bridge Road. The policies of the **Mizzou NEWS** are the responsibility of the editors. Statements published here do not necessarily reflect the views of the administration or any department of the University.

- Editor-in-Chief ..... Pamela Johnson
- Feature Editor ..... Holly Ross
- Sports Editor ..... Dave Depker
- Chief Artist ..... Bill Burns
- Faculty Advisors ..... Miss Judith Jenkins  
Mr. William Whealen

Staff Writers

- Bill Price, Gail Strong, Joy Zumbahl, Warren Nakisher, Sue Estes, Mary Ellen Fahey, Sharon Kral, Mary Killenberg.

# School Faces Future of Massive Traffic Jams

by GEORGE M. KILLENBERG  
Mizzou NEWS Staff Writer

The University of Missouri at St. Louis is rapidly heading for a massive traffic jam unless parking and traffic flow problems here are solved.

University officials are already faced with the dilemma of too many auto driving students and not enough parking facilities. Even though more parking spaces have been added this year, the number won't be enough to match the increase in enrollment.

With the shortage of lots, the University is encouraging students to form car pools. "We've made the problem as clear as possible to the student body," explained University Business Officer John Perry, "but we need co-operation."

Right now about the only solution to meet the parking shortage is to "develop a plan to build as many parking places as needed each year," Mr. Perry said. "But to follow such a plan may run into staggering sums," he added.

A professional firm which studied the auto problem estimated that surface lots would cost nearly \$300 a space and parking garages almost \$1,500 per auto.

Although the cost will be very high, garages seem to be the only practical way to accommodate the large number of autos which will overrun the campus in the future. "If we build surface parking spaces over 50% of our total acreage would be covered with lots and connecting roadways," he said.

But no matter how the parking problem is tackled, the brunt of financing will fall on the student's shoulders. "President Ellis at Columbia has made it clear that parking here would have to pay for itself," Mr. Perry explained.

But the parking shortage is not the University's only auto problem. With the campus here expected to jump from the smallest to the largest school in the University system within the short span of

10 years, traffic flow will present additional headaches.

According to a study made by the Missouri Highway Commission last fall, Natural Bridge Road, a major approach to the campus, handles over 18,000 vehicles during a normal 24 hour span. Florissant Road, another main artery, carries nearly 11,000 autos daily. Highway engineers expect traffic to double or triple on these thoroughfares by 1975 due to the growth of the University.

Mr. Perry cited traffic problems at the sprawling new shopping complex on North Lindbergh as similar to ones the University will encounter. "Of course, our growth won't be as rapid," said Mr. Perry, "but it's a good example of how traffic can be tied up in a congested area which lacks adequate roadways."

Obviously the need for modern, fast moving thoroughfares around the campus will be acute in the future. Even now many of the main streets that serve the University are inadequate. Normandy Drive, a narrow, asphalt road with a 20 m.p.h. speed limit is a typical example.

The Missouri Highway Department plans to add a needed stop signal at the University entrance, but this will bring only temporary and partial relief.

Increased Bi-State Transit Service would help lessen the burden. Right now only three slow-moving bus lines serve the campus. Bi-State's lone rapid transit carrier, the Natural Bridge Express, operates only during rush hours.

The new Interstate Highways being built near the University might help ease auto congestion, but there still is a need for modern arteries to speed traffic to the expressways.

Parking and traffic menaces are not unique to this University--many schools have met and solved similar problems. What is unique is that the University has no criterion to work from.

Schools like UCLA and the University of Illinois are older and established and have had to face these problems in smaller doses. But more importantly, other universities have resident students who are not allowed to keep autos on campus. Here, everyone commutes -- students, faculty, and staff.

More up-to-date highways, better Bi-State Service and additional stop signals are partial remedies. The ultimate cure lies in the University's hands alone.

Like any youngster, the University of Missouri at St. Louis is beginning to feel its growing pains. But these pains may linger ominously into its adulthood unless parking and traffic problems here are soon solved.

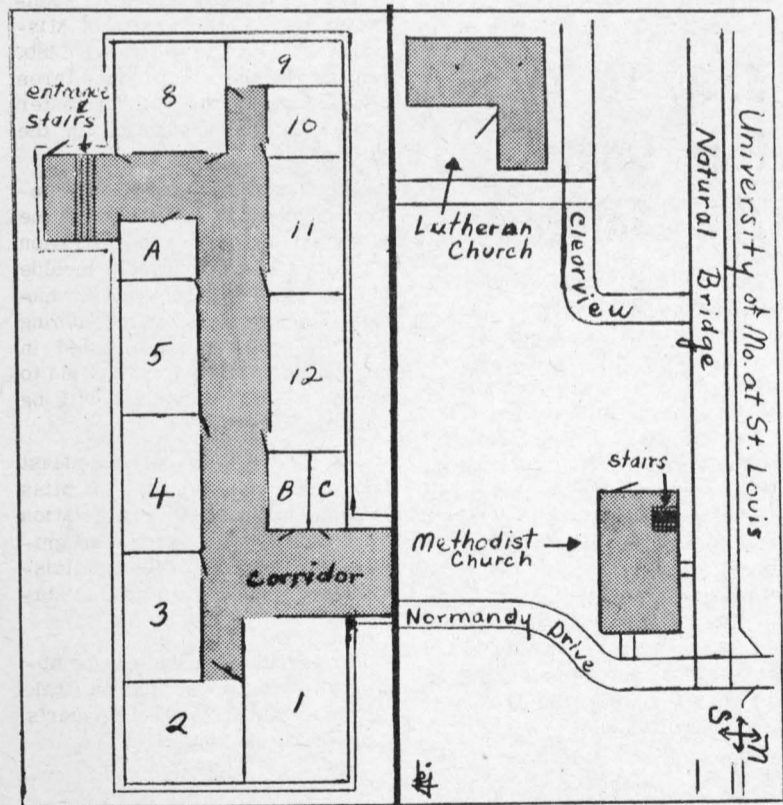
## Lecture Halls Unfinished; Moved to Local Church

The classroom wing of the new building has been completed and is ready for use starting today. However, only the ground floor rooms in the laboratory section can be used immediately.

The large lecture halls, 105 and 120, will be ready for classes in 2 or 3 weeks, according to Mr. John Perry, Business Officer. The delay is due to a strike by American Seating which has contracted to supply the desks for the lecture halls. In the meantime classes

mid August of this year, but due to strikes, materials were either unavailable or extremely difficult to get. This delay in construction has created a problem for students since the new lounge will be in the center wing.

Between classes students may relax in the old cafeteria which has taken in the space formerly occupied by the book store, Mr. Perry explained. The only alternative to students seeking a



**HOW TO GET AROUND THE CAMPUS.** Left panel shows the general room plan of all four floors in the new building. The right panel shows the location of the two churches where lecture classes will be held temporarily.

for those rooms are being re-scheduled to the Normandy Methodist Church across the street from the University and the Unity Lutheran Church by Bel-Nor School.

Faculty offices in the center wing and the laboratories will not be finished for another two or three months. Temporarily, science labs have been constructed in the present administration building.

The entire three wing complex was scheduled to be completed in

place to gather would be the study lounge at the Normandy Methodist Church or Newman House.

Changes are occurring in the old building also. The former Student Association office and room 30 are combined to make a larger book store. The S.A., Mizzou NEWS and Landmark office is upstairs in 211. The library is now in 108 and the old library is housing Mr. Carl Huffman, Director of University Development and Dr. Harold Eickhoff, Dean of Students.

## Parking Ends On Nat'l Bridge Rd.

The University lost close to 200 parking spaces when Bel Nor officials unexpectedly planted no parking signs along both sides of Natural Bridge Rd. which borders the Campus.

In addition, Bel Nor placed signs along its side streets, apparently anticipating the overflow from crowded University lots.

Parking is prohibited from 8 a.m. to 9 p.m., the same hours day and night classes are held at the University.



## Official Seal

Pictured above is the Official seal of the University of Missouri at St. Louis. On the left is the flag of the State of Missouri signifying the University as part of the State educational system. On the right is the new flag of the City of St. Louis, signifying the University's basic service to the Greater St. Louis area.

The famous "Columns" landmark of the University of Missouri at Columbia denotes the fact that the St. Louis Campus was, in a sense, an offspring of the Columbia Campus. At the bottom of the seal is the first administration - classroom building of the St. Louis Campus. The date 1839 is the year the University was founded; the date 1960 is the year the St. Louis Campus was born. The four stars designate the St. Louis Campus as being part of the four-campus University of Missouri system.

\$25 PRIZE

## Students Get Chance To Pick School Mascot

The Student Association, under the guidance of the Image Committee will sponsor a contest to select a University mascot. The contest is open now and all entries must be mailed or submitted to the Office of University Development before 10 a.m. October 19. The three best entries selected by the Image Committee will be submitted to a student vote and a \$25 prize will be given to the winning entry.

Entries should include a short statement in support of the choice and why it was chosen. The Image Committee will judge the contest and reserves the right to reject all entries if, in its judgment, none is satisfactory.

Entries that were submitted in the Spring contest last semester will automatically be re-submitted.

Patterson  
Honda

EXCLUSIVELY HONDA

PARTS - SALES - SERVICE

CLAYTON ROAD AT BIG BEND

MI 7-6465

Taylor's



Complete fashion store for women . . .

Who appreciate quality and style

A New Concept In Shopping Convenience

EV 5-7724

Normandy Shopping Center

Taylor's

is where the action is . . ."

We have the winning team of shoes, - traditional mocs, ghillies, go-go heels and the new 'In Group' collection just waiting for game to begin. Score a touchdown in prettier shoes for you - from Taylor's, Shoe Dept. NATURALLY!

EV 5-7724

Normandy Shopping Center

## Subscribe Now To . . .

UNIVERSITY OF MISSOURI - ST. LOUIS

## 1966 Landmark Yearbook

"Growing With The University"

SUBSCRIPTIONS, OR DOWNPAYMENT \$2

## BECOME ACTIVE NOW!

# Students Urged to Join Organizations on Campus

All students are encouraged to participate in the many extra-curricular activities offered on the University of Missouri St. Louis campus this term.

Students who wish to take part in most campus activities must maintain a 2.0 cumulative grade average. Here is the list of extra-curricular activities and who to contact:

**SENATE:** The student government at the University of Missouri at St. Louis, known as the Student Association, is composed of three branches, the Executive, the Senate, and the Student Court. In the fall there will be a freshman student election so that those students may have representatives in the Senate. Any freshman interested in running for Senator or working with the Student Association in any way, please contact Alan Handler (WY 4-7660) or Wayne Ennis (MI 7-0614).

**FACULTY COMMITTEES:** The student body also has representation on various faculty committees. If you are interested in an appointment, call Alan Handler (WY 4-7660) or Wayne Ennis (MI 7-0614). These appointments are not only an honor, but offer special opportunities, and teach responsibility. Sophomores and Juniors are usually selected for these committees.

**SOCIAL COMMITTEE:** The Social Committee is a Senate standing committee. The members of this committee plan and carry out the various social affairs of this campus. It is not necessary to be a Senator to participate. Call Cheryl Taylor (UN. 4-6395) if interested.

**PURPLE ONION:** The college night club, known as The Purple Onion, appears on campus once a month sponsored by the Student Association. Student talent pro-

vides entertainment that ranges from folk singing to skits and instrumentals. If you are interested in performing or helping stage the Purple Onion see or call Sharon Kral (TE 8-4782).

**LANDMARK:** The University of Missouri at St. Louis publishes a yearbook called The Landmark. Members of the staff will be expected to meet bi-weekly with more frequent meetings before deadlines. The staff needs photographers, typists, copywriters, lay-out people and salesmen for the extended advertising program. If you are interested in working on the Landmark, please contact Jane Moore (RA 4-1202).

**MIZZOU NEWS:** The student newspaper, The Mizzou News, is published bi-weekly and contains campus news. There are positions on the staff as reporters, typists, advertising salesmen, lay-out artists, and proof readers. If interested call Pam Johnson (MI 7-1788).

**SPANISH CLUB:** The Spanish Club is an informal group that promotes the ability to speak Spanish and creates interest in Spanish culture. The program for 1965-66 includes bi-weekly meetings at the Pancake House, slides and movies, speakers, social service, an annual fiesta and a picnic. The membership is open to any interested students. Call Dr. Frances Crowley (PA 7-5022)

**DRAMA CLUB:** The University Players will give two productions during the 1965-66 season sponsored by the Drama Club. Meetings are held every Monday at 4:00 P.M. starting the second week after school starts. Anyone interested in Drama, either in acting or in other capacities, is invited to join. The dues are 50 cents per semester. Call Sharon Kral (TE 8-4782) or Barb Duepner (UN 7-2822).

**PHILOSOPHY CLUB:** This is an informal group that meets at the Newman House, 8200 Natural Bridge, to discuss philosophers and philosophical problems. If interested see any teacher in the Philosophy department.

**CHEERLEADERS:** The University of Missouri at St. Louis selects cheerleaders through a committee of the Student Association. The cheerleaders support school athletics by cheering at the basketball games and wrestling meets and assist in planning the homecoming activities with the social committee. Cheerleaders will probably be expected to pay for their own uniforms. If you would like to try out, call Jane Moore (RA 4-1202).

**BASKETBALL:** The basketball team will compete in approximately 25 games. There is also the possibility of one or two tournaments during the season. Practice will be on Monday through Friday from 4:45 to 6:30 at Normandy Junior High gym. The first practice will be the third week in October. Those interested should contact Dave Willson (PA 5-1542) or John Sarantakis (PA 1-6958).

**BOWLING:** The MU Bowling Team meets at Normandy lanes and competes against other area teams. The 1964-65 team placed third in the Inter-collegiate League. If you like to bowl, see Brian Bollier (WO. 1-0177).

**WRESTLING:** During the 1965-66 year, the wrestling team will have 7 or 8 meets. The meets will be with such teams as Washington U., Kirkwood "Y", and possibly the U. of Missouri at Columbia. Practice will be at Normandy High School two nights a week.

**INTRA-MURALS:** The Student Association sponsors intramurals and some are available for both males and females. The sports offered are: football, softball, volleyball, tennis tournament, and basketball. If you would like to participate please call Dave Depker (HU 1-1965).

**YOUNG DEMOCRATS:** This organization, primarily political, sponsors many social events for its member. This program for 1965-66 will include various speakers, a banquet, two hayrides, a dance and a luncheon. If you are interested in joining, contact Dave Depker (HU 1-1965).

**YOUNG REPUBLICANS:** This group is also organized to promote interest in politics. Anyone interested in participating in the Young Republicans may get in touch with Skip Hill (UN 9-2785).



**DESK JOB.** Student workers assembling furniture for the MU-St. Louis' new building are, from foreground, Lee Neely, junior; Ken Frank, junior; and Scott Kolb, sophomore.

## Teach-In On Viet Nam At Wash. U., Saturday

Washington University will hold a special "Teach-In" Saturday, Oct. 9, to debate the role of U. S. Foreign Policy in Viet Nam, the Dominican Republic, and other world-problem spots. The program, being held at Wohl Center on the Washington University Campus, will begin with a closed-circuit broadcast from the International "Teach-In" at Toronto, Can. All interested persons are invited to attend.

The Toronto program, being held simultaneously with Washington and other Universities across the country, will bring together representatives of several governments who are involved in the current international "hot spots." The format will permit wide-ranging discussions on Southeast Asia and Latin America.

The broadcast will be in two segments, one from 8:30 a.m. to

10:30 a.m., and the other from 1:30 p.m. to 4:30 p.m.

Immediately following the program from Toronto, local professors will chair an informal discussion at Washington U. Later in the evening, representatives of the State Department, local Political Scientists and other guest speakers will join in two panel sessions to debate U. S. Foreign Policy.

## Drama Group Welcomes New Student Talent

The University Players, sponsored by the University of Missouri at St. Louis Drama Club, tentatively plans to produce three one-act plays the fall semester and a major production in the spring.

The first meeting will be Monday, October 11, at 4 P.M. in the Lounge of the Administration Building. The agenda will include nomination of officers and formation of committees for the coming year. All students interested in any phase of drama are invited to attend. Refreshments will be served.

The Drama Club was formed last fall under the guidance of Miss Judith Jenkins. Their presentation of Antigone won the group recognition and approval of the Administration and faculty as well as students.

Further information may be obtained by contacting Sharon Kral, Barbara Duepner, or this year's sponsor, Miss Jenkins.

## S. A. To Throw Free Dance This Saturday

This Saturday night, October 9, the campus will rock when the Student Association opens its social season with an all-school mixer on the patio behind the Administration Building.

The campus will "go Western" for the dance, with a chuckwagon, corral, and haystacks. Music will be supplied by the Reandos Dance Band. Refreshments are to be served.

Unless the weather is bad, levis and sweaters should be appropriate for dudes and ranch-hands alike. There will be no admission charge for students, but students must show identification.

## Chancellor Bugg Addresses Students

(Continued from Page 2)

second Science building, a gymnasium-auditorium, and a building to house the School of Business and Education will be established in the very near future. As an urban university we have an almost insoluble problem with automobiles, for the State furnishes no funds to build these. Until we can finance a Union, we shall have an equally difficult problem of providing space for the cafeteria, the book store, student organizations and activities. We are aware of these problems, and of the diffi-

culty all of us have in living with them. We are doing the best we can to solve them, but the solutions are not quick nor easy. None affects the quality of the education here, for this depends upon excellent teachers and able students, and these we have. Our laboratories, when completed, will be the finest and most modern undergraduate science facilities in the State. Our library will grow rapidly, and will, each year, be more adequate to the needs of the students and faculty here. Yet we

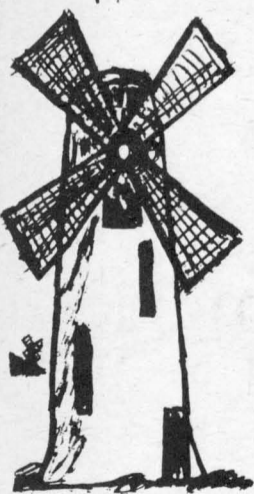
realize that patience is a virtue which, if forced upon us, is nonetheless difficult to cultivate.

Again, welcome. I hope to have the opportunity of meeting and working with many of you. And I am always glad to talk with any of you at any time that I can. I wish for each of you not only success, but satisfaction as well, during the coming year.

Cordially,

James L. Bugg, Jr.  
Chancellor,

## Holland House



### Cafeteria

FOR YOUR  
EATING ENJOYMENT

CAFETERIA

MON. - SAT. 11-2:30  
4:30-8

OPEN ALL DAY SUNDAY

Lucas-Hunt and Nat'l Bridge  
NORMANDY SHOPPING CENTER

# Fifty-Eight Persons Join Growing Faculty Staff

A total of Fifty-eight persons have been added to the faculty of the University of Missouri at St. Louis this fall.

They are: Jack G. Barnhill, Asst. Prof. of Accounting; Alan F. Berndt, Asst. Prof. of Chemistry; Thomas Bikson, Inst. in Philosophy; William C. Blecha, Inst. in Physics; John J. Boswell, Asst. Prof. of Psychology; Malcolm S. Brown, Asst. Prof. of Philosophy; Mary Ann Callanan (Mrs.), Inst. in English; Chi Cheng Chen, Inst. in Mathematics; Mary D. Chomeau, Inst. in French; Ina F. Coor, (Mrs.) in French; Ina F. (Mrs.), Inst. in Pol. Science (part time); Patrick O. Copley, Asst. Prof. of Education; Peter Cocozzella, Inst. in

Spanish; Lyle Dorsett, Asst. Prof. of History; Charles T. Dougherty, Prof. of English; Richard E. Dunlap, Inst. in History; RDonald H. Driemeier, Inst. in Finance; Kenneth Fidel, Inst. in Sociology; Nancy K. Forderhase, Inst. in History; Arthur H. Hafner, Assoc. Prof. of Education; Marcel Halberstadt, Asst. Prof. of Chemistry; James N. Henslin, Inst. in Sociology; Robert Hight, Asst. Prof. of Physics; Alice Karl (Mrs.), Inst. in Pol. Science (part time); John E. Kramer, Jr., Asst. Prof. of Sociology; Alan G. Krasnoff, Asso. Prof. of Psychology; Barry Levine, Jr., Inst. in Commercial Law (part time); Wolfgang A. Luchtig, Asst. Prof. of German; Jane Miller (Mrs.), Inst. in Chemistry; Kenneth

E. Miller, Assoc. Prof. of Music; William E. Mitchell, Asst. Prof. of Economics; Nancy Ann McBride, Inst. in Art History; Wayne McDaniel, Asst. Prof. of Math (returning from leave of absence). George Montag, Inst. of English, (Returning from leave of absence); Leila E. Morera, Asst. Prof. of Spanish; William H. Nolte, Assoc. Prof. of English; Robert V. Osmon, Assoc. Prof. of Education; Margot Pallmann, Inst. in Math; Anne Perry (Mrs.), Inst. in French; John C. Pisoni, Inst. in German; A. Wendy Preston, Inst. in French; J. Neal Primm, Professor of History; Elba Remmling, Inst. in Spanish; William Saigh, Assoc. Prof. of Marketing; Rufino R. Sanchez, Inst. in Spanish; Lyman Sargent, Asst. Prof. of Pol. Science; Mary A. Sayons (Mrs.), Inst. in Psychology (part time); Ronald Schmoll, Inst. in German; Charles H. Stein, Inst. in English; Deon O. Stevens, Asst. Prof. of Education; Robert S. Sullivant, Prof. of Pol. Science; Blanche Touhill (Mrs.), Asst. Prof. of History; Samuel Vinocur, Asst. Prof. of Education; Ingo Walter, Asst. Prof. of Economics; Stuart Weidman, Asst. Prof. of Chemistry; Herman N. Weill, Assoc. Prof. of History; Frederick W. Wilke, Inst. in Mathematics; George C. Wittered, Assoc. Prof. of Management.



Dean Eickhoff



Dean Driscoll

## Two Veteran Professors Named To Deans Post

(Cont. from Page 1)

ship in 1961. He also served for a time as chairman of the department of history at Columbia.

He obtained his A.B. degree at Hampden-Sydney College in Virginia in 1941, and his A.M. degree from the University of Virginia in 1942. After serving with the U.S. Air Force in World War II, he resumed his graduate studies and received his Ph.D. degree from the University of Virginia in 1950, after he had been appointed to the teaching staff in Columbia. He had also served as an instructor in history at George Washington University in Washington, D.C., in the summer of 1948.

A recipient of numerous scholastic honors and a member of a number of professional societies, he has published a textbook on Jacksonian Democracy and is working on a book on Jeffersonian Democracy as well as a biography of James N. Mason.

Along with his appointment, Chancellor Bugg, recently announced the appointment of three faculty administrators to dean's positions.

Assistant Dean Harold Eickhoff, was named Dean of Student Affairs. Dr. Eickhoff joined the MU-Normandy Residence Center in 1961 and was named Acting Chairman of the Social Science Division in 1963 when the University of Missouri at St. Louis was officially established.

Dr. Eickhoff received his A.B. and M.A. degrees from the University of Kansas City and his Ph.D. from the University of Missouri, Columbia. While at Colum-

bia, he served the University in a post involving student-administration co-ordination.

Dr. Glen R. Driscoll, Professor of History and Chairman of the Division of Social Science, has been appointed Dean of Arts and Sciences. A teacher and scholar in the fields of general intellectual history, the history of science and 17th century European history, Dr. Driscoll received his A.B. degree from the University of Louisville and his M.A. and Ph.D. in history from the University of Minnesota.

Dr. Joy E. Whitener, a newcomer to the University, has been named Dean of the Evening Division. He has been Assistant Superintendent of Schools in Webster Groves, Mo. since 1962, and has served as a superintendent, principal and teacher in various Missouri and Illinois communities.

Dr. Whitener received all his degrees in education; his B.S. from Southeast Missouri State College, his M.S. from the University of Missouri at Columbia and his Ed. D. from Washington University.



Dean Whitener

### PLAN SPEAKER PROGRAM

## Campus Y.D.'s Organize Social, Civic Projects

(Editor's Note) Mr. Dave Depker was President second semester of last year's club. As he also writes for the Mizzou NEWS, Mr. Depker

will periodically report the Young Democrat activities throughout the year.

Since there are no important state or local elections planned during the coming school year, the Young Democrats will shift their attention to social and civic projects on the St. Louis Campus and in the surrounding communities.

Among these projects will be a speakers program designed to inform and interest students in the workings of local and state politics. Various officials will be invited to explain their duties and their election or appointment procedures.

Socially, the Y.D.'s will try to enlarge on last years' activities. There will be a dance each semester, with at least one supplementary social affair per month. These activities will complement S.A. affairs and give student social life an added dimension.

Summing up the outlook for this coming year, the Y.D.'s hope to do many things not possible last year with an extended membership of 450.

Last year the Y.D. program included the appearance of all the state officers, a 750% increase in membership from 40 to 300, and the reputation of being the most active club on campus, outside of the Student Association itself.

## Sophomore Here Gets Y. D. Post

Miss Pam Johnson, sophomore, was elected Recording Secretary of the state Young Democrats--College Division last June 4 at the state convention in Columbia, Missouri.

Also elected were President, Rich Kinder (Columbia), Vice president, Bill Stout (Kansas City), Corresponding Secretary, Rich Goldenhersh (Washington U.), AND Treasurer, Walter Sheata (Washington U.).

The Young Democrats at the University of Missouri at St. Louis, along with Washington University, University of Missouri at Rolla, Columbia, and Kansas City, Maryville College of the Sacred Heart, and other Missouri colleges, sent delegates last June 4th and 5th. Those chosen from the University here were Pam Johnson, Jane Moore, Joy Zumbahl, Toni Rains, Betty Barret, Dave Depker and Ron Boden.

Miss Johnson's term of office runs for one year.

## Students Must Notify Local Draft Boards

Male students must notify their local Selective Service Board by October 31 in order to keep their student classification.

A Selective Service spokesman said that any student who fails to advise the local board of his student status will be immediately subject to the draft.

Also, termination of student status, discontinuance of a full-time course of instruction, or unsatisfactory achievement will cause the deferment to be cancelled.

Students who wish to extend their deferments should advise the local board of student status and request the Office of Admissions to certify student status on SSS Form No. 109.

### Favazza Florists

No. 7 Normandy Shopping Center EV 3-4576



Member F.D.I.C.



EV 3-5555

ARE YOU MONEY MANAGER?  
A

Let your Normandy Banker advise you. He'll begin with your own checking account—for convenience and easy book-keeping. Please stop in! Our officers will be delighted to serve you.

**Normandy Bank**

7151 Natural Bridge (just east of Lucas Hunt Rd.)  
Free Parking on all four sides—1400 spaces

### Hubbell Jewelry

No. 21

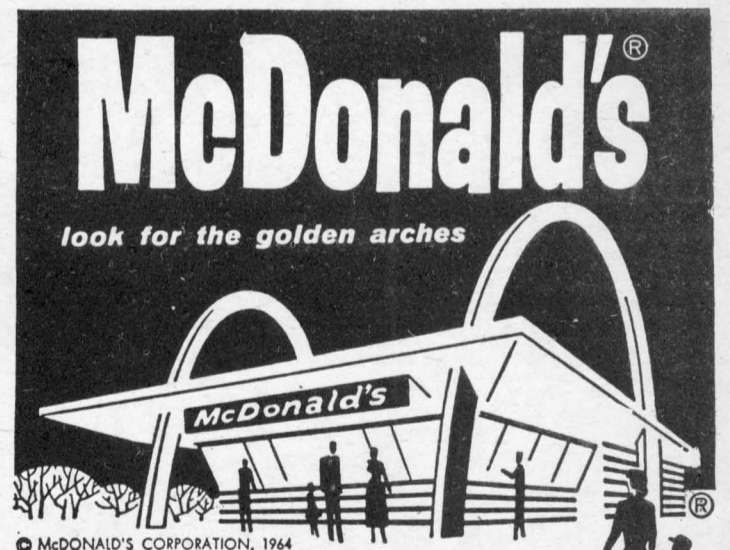
NORMANDY SHOPPING CENTER

We have a complete selection of M.U. Charms for Milady

Watch and Jewelry Repair

CO 1-2806

SUPPORT  
MIZZOU NEWS  
ADVERTISERS

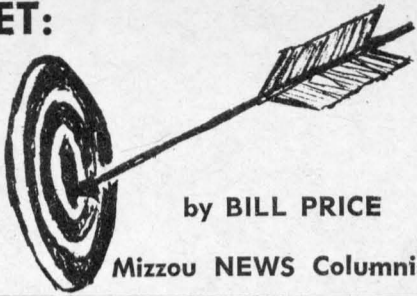


100% Pure Beef Hamburgers  
Crisp Golden French Fries  
Old-Fashioned Shakes

8624 Natural Bridge

IT'S ON TARGET:

THE Shaft



by BILL PRICE  
Mizzou NEWS Columnist

(Editor's Note: Columnist Bill Price gives in tongue-in-cheek view of the students, faculty, and activities in and around the University in his feature, "The Shaft." Price explained that his is a rather subtle humor and requires a sophisticated mind to interpret it. Subtle or not, Price's column is entertaining, especially so for those familiar enough with the University to catch his fun-poking innuendos. "The Shaft" will be a regular feature in the coming issues of the Mizzou NEWS. We hope it will be a regular feature with you, too.)

Once upon a time there was an NFS (New Freshman Student.) When he came to MUNRC, SLUM, MUSLC or whatever, he brought along his mummy and daddy, because he was not through puberty yet and couldn't register by himself.

"Pardon me," said the daddy to an intelligent looking junior and his companion who were engaged in a game of checkers in his - the junior's - car. It must have been checkers, because she - the companion - had just screamed, "If you make one more move like that, I'll crown you!"

At any rate, he - the daddy - who had just said, "Pardon me," went on to ask where the admissions building was.

"Arg," said the junior, pointing to the stately colonial-style building at the end of the long, scenic, tree-lined drive, over which a caravan of two-humped bulldozers was making its destructive way.

"Thank you, thank you, thank you," sniveled the NFS, groveling at the feet of the junior who had just risen to his full height of ten hands and one finger. They - the mummy and daddy - flipped the junior a quarter as recompense for his trouble, but he - the junior - was by this time again engrossed in the checker game.

When they reached the building, they took their places at the end of a long line, but instead of leading to the admissions office,

Football Tickets Available by Mail

All students at St. Louis Campus may purchase tickets for University of Missouri home games at the reduced student rate. However, this must be done on an individual game basis, since requests for season tickets have already been processed.

Single game tickets may be ordered by listing the desired game and sending \$5.00 for each ticket plus a 25¢ mailing charge to:

Athletic Ticket Office  
Post Office Box 629  
Columbia, Missouri

**Deloire Barber Shop**  
8149 Delmar Blvd.  
VO 3-9628  
Appointments taken but not necessary  
3 barbers to serve you  
Joe Bob and Tony specialize in hair styling and razor cutting

as they had hoped, it - the line - led to a throne in a small office where a student in a yellow sweat-shirt sat smiling, and smiling, and yet, smiling.

After shaking hands and smiling back, they - guess who - began again their odyssey to the admissions office, which was again interrupted, this time by a mass of students which converged on the NFS after he was heard to say, "H - I could smile like that if I had a coat hanger in my mouth."

They - the mass - lifted him - the NFS - on their collective shoulders, chanting, "Our Voice, our Voice!" The NFS had become the VSB (Voice of the Student Body.) They bore him ceremoniously to the site of the student union, a nebulous concept for which we are privileged to pay \$10 a semester. There, they sacrificed him to NESIEWDUB, the god of the students. Ten dollars and a student whose life might have been spared had the student BOD been able to find a maiden. Darn expensive, those nebulous concepts.

Cheerleaders To Practice Friday; Co-ed's Needed

Girls interested in cheerleading for MU-St. Louis are invited to attend the three practice sessions this month. The dates for these practices are Oct. 9, Oct. 16, and Oct. 23. All sessions will be from 9-12 a.m. The site of the practices will be announced later in the week.

Try-outs will be Oct. 29. A committee of four faculty representatives, two representatives of the basketball team, two members of the Student Association, and one wrestling team participant will select the cheerleaders.

Besides cheering at the games, cheerleading duties will include publicizing athletic contests, helping plan homecoming festivities, and encouraging school spirit in general.

Practice sessions will be under the direction of last year's returning cheerleaders Enid Hence, Sandi Blodgett, Brenda Brown, and Jane Moore. Applications can be obtained in Room 211, the Student Association office. Those interested should watch the bulletin boards for further announcements and plan to attend the practices.

**Speidel**  
FLORENTINE  
THE SMART CONTINENTAL LOOK IN GOLD FILLED ONLY  
\$7.95 F.T.L.

**E. A. Horstmeier**  
7246 Natural Bridge  
EY2-3063

ELEVEN LETTERMEN RETURN

Basketball Team Wants 1st Place

Eleven returning lettermen, plus the possibility of many freshmen recruits, gives Coach Bob Meyers an excellent opportunity to improve on last years' co-championship basketball club. Co-captains Dave Willson and John Sarantakis especially want the Greater St. Louis Small College Conference crown for themselves, rather than sharing it with Sanford Brown Business College as they did last year.

Coach Meyers has called a meeting for all basketball prospects October 14 at which time he hopes

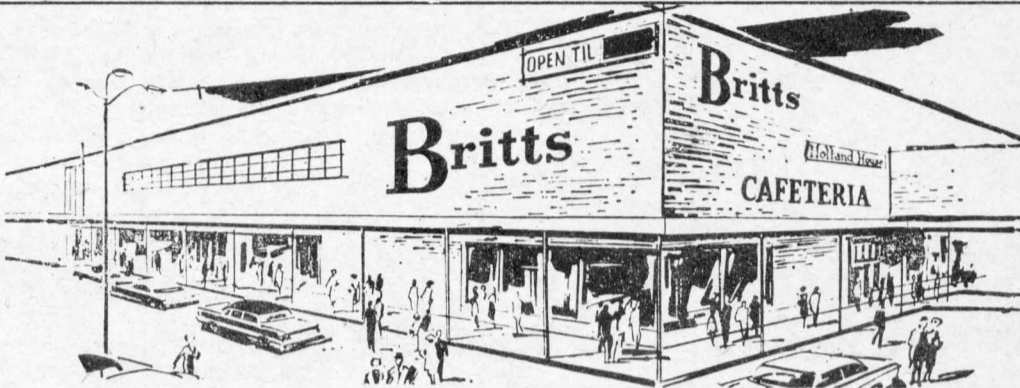
to outline plans for the coming season that will begin midway through November.

Some of the highlights of the 64-65 campaign were the double over-time defeat of Sanford-Brown at homecoming, and the second place trophy won at the Boy's Club Invitational Tournament.

Besides Co-captains Willson and Sarantakis, other returning squad members are Ron Clark, Steve Novak, Bob Brookes, George Sabol, Bob Novak, Jay Snider, Ed Malter, Jack Quinn and Brian Bass.



Coach Bob Meyers



MAKE US YOUR BACK-TO-SCHOOL HEADQUARTERS

A Hearty Welcome

To All Students And Faculty Of The University of Missouri Normandy Branch  
The Management

Visit Our Complete Young Men's And Young Women's Campus Shops

You Will Recognize Such Top Brand Names For Young Men as:

- Levi Strauss
- Farah
- H. I. S.
- McGregor
- Wembley
- Campus
- Hickok
- Jantzen



VISIT OUR HOLLAND HOUSE CAFETERIA

LUCAS-HUNT AND NATURAL BRIDGE RD

49 Departments

Britts

